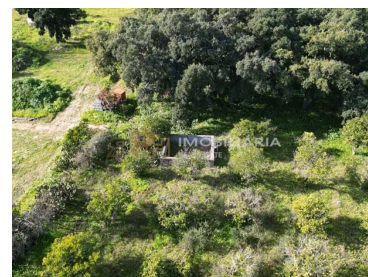
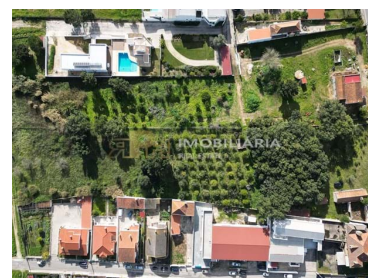




Santarém - Bouwgrond



N/A
CLASSE
ENERGÉTICA

4500

Gebied (m²)

9702

Landoppervlak (m²)

259 000 €

(EUR €)

eigendomseigenschappen

- Energiecertificering: Niet van toepassing



Rita Pinto e Nuno Hilário

966617800 ²

geral@rph.pt

T 243 155 655 ¹ · T 966 617 800 ² · E geral@rph.pt
Av. Bernardo Santareno, Loja 29-B, 2005-177 Santarém
AMI 11994

¹ (Bellen naar landelijk vast netwerk) | ² (Nationale mobiele netwerkoproep)