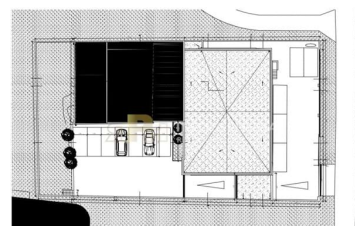
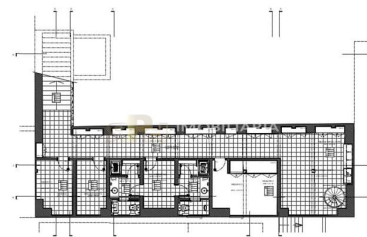





## Santarém - Warehouse



 **10**  
slaapkamers

 **5**  
badkamers

 **1341**  
Gebied (m<sup>2</sup>)

 **1350**  
Landoppervlak (m<sup>2</sup>)

**1 000 000 €**  
(EUR €)

### eigendomseigenschappen

- Ingerichte kasten
- Waterafvoer
- Bouwjaar: 2013
- Energiecertificering: B



**Rita Pinto e Nuno Hilário**

966617800 <sup>2</sup>  
geral@rph.pt

T 243 155 655 <sup>1</sup> · T 966 617 800 <sup>2</sup> · E geral@rph.pt  
Av. Bernardo Santareno, Loja 29-B, 2005-177 Santarém  
AMI 11994

<sup>1</sup> (Bellen naar landelijk vast netwerk) | <sup>2</sup> (Nationale mobiele netwerkoproep)