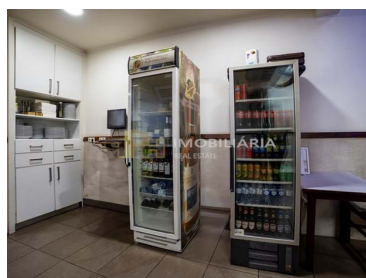




## Almeirim - Commercial property



Bedrooms



Bathrooms



Area (m²)

**786 900 €**

(EUR €)

## Restaurant, Almeirim - For Sale

REF<sup>a</sup> LOJ/1088

Restaurant, Almeirim - For Sale

Property in full operation on the emblematic street of "Sopa da Pedra" with 632 m² of private gross area, consisting of two floors with independent access:

1st Floor – Restaurant

- Room with capacity for 90 seats, with the possibility of expansion to up to 110 seats;
- Terrace with capacity for 16 people;
- Kitchen equipped with industrial stove, oven, refrigerator and freezer;
- Pantries and storage



**Bruno Conde**

966617800 <sup>2</sup>

brunoconde@rph.pt

**T 243 155 655 <sup>1</sup> · T 966 617 800 <sup>2</sup> · E geral@rph.pt**  
**Av. Bernardo Santareno, Loja 29-B, 2005-177 Santarém**  
**AMI 11994**

<sup>1</sup> (Call to national fixed network) | <sup>2</sup> (Call to national mobile network)



- Separate bathrooms for customers and staff;
- Administrative office;

Other information:

- 4 industrial air conditioners
- Skylight for natural lighting

2nd Floor – Housing and Annex Space

- 1 bedroom apartment in good condition;
- Space for storage and storage to be remodeled;
- Terrace.

This property offers an excellent opportunity for both commercial and residential investment.

NOTE: This property is to be sold together with Ref. LOJ/1089.

RPH - Real Estate - We make a difference!

With the start of activity in January 2016, we have a young, experienced, dynamic team with the ability to solve.

This team together has more than 30 years of experience in the real estate market.

To help our clients, we offer a set of broad solutions ranging from mediation, topography, consulting, projects, refurbishments, etc.

We have qualified technical staff, as well as several partners recognized for their professional careers.

We are here for you!

AMI 11994

All information presented on this page is the sole responsibility of our Agency.  
They should be considered correct but do not exclude the need for verification.  
This information is not binding.

## Property Features

- Built year: 2006
- Floors: 2
- Energetic certification: C



**Bruno Conde**

966617800 <sup>2</sup>

brunoconde@rph.pt

**T 243 155 655 <sup>1</sup> · T 966 617 800 <sup>2</sup> · E geral@rph.pt**  
**Av. Bernardo Santareno, Loja 29-B, 2005-177 Santarém**  
**AMI 11994**

<sup>1</sup> (Call to national fixed network) | <sup>2</sup> (Call to national mobile network)