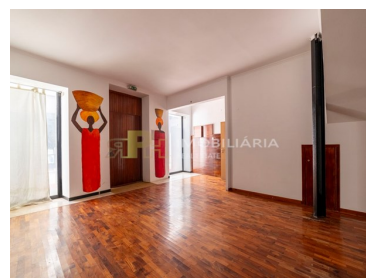




Santarém - Building



6
Bedrooms

3
Bathrooms

240
Area (m²)

80
Land Area (m²)

230 000 €
(EUR €)

Property Features

- Fireplace
- Built year: 1937
- Kitchenette
- Mains water
- Terrace
- Floors: 3
- Energetic certification: D
- Balcony



Rita Pinto e Nuno Hilário

966617800 ²
geral@rph.pt

T 243 155 655 ¹ · T 966 617 800 ² · E geral@rph.pt
Av. Bernardo Santareno, Loja 29-B, 2005-177 Santarém
AMI 11994

¹ (Call to national fixed network) | ² (Call to national mobile network)