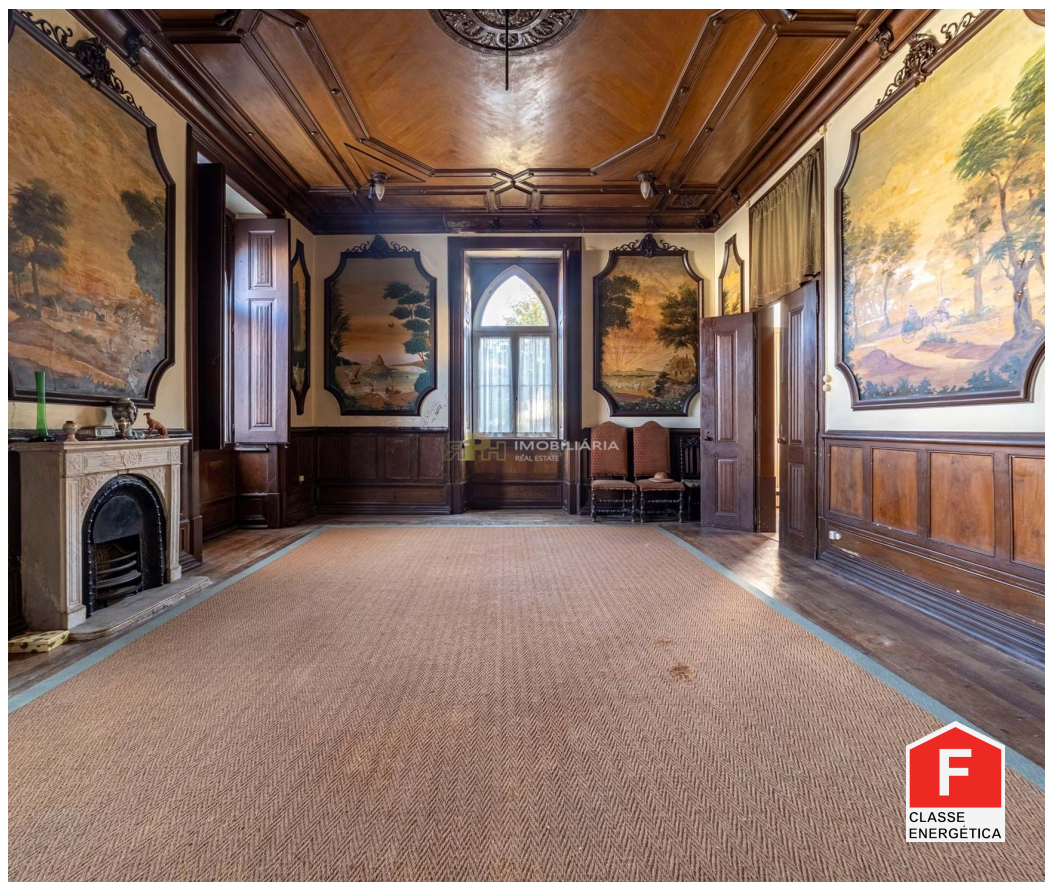




Chamusca e Pinheiro Grande - Villa



21
Bedrooms

9
Bathrooms

2408
Area (m²)

4873,5
Land Area (m²)

760 000 €
(EUR €)

Mansion built in 1861, with 1383m2 of construction

Palace built in 1861, located on a plot of land with 4,873.5 m², with a gross area of 1,383.0 m².

- Consisting of ground floor, first and second floors, which is located in attic;
- Twenty-one divisions;
- Two lounges with stone fireplaces;
- Library that extends over three divisions;
- Nine bathrooms spread over the floors;
- Private chapel with access to the street;
- Landscaped outdoor patio;
- Outdoor warehouses;
- Ring;
- Attachments;



Rita Pinto e Nuno Hilário

966617800 ²
geral@rph.pt

T 243 155 655 ¹ · T 966 617 800 ² · E geral@rph.pt
Av. Bernardo Santareno, Loja 29-B, 2005-177 Santarém
AMI 11994

¹ (Call to national fixed network) | ² (Call to national mobile network)



Historic palace from 1861, located on the main street of Chamusca, on a plot of 4,873.5 m² and with a gross area of 1,383 m².

With twenty-one rooms, spread over ground floor, first and second floors, it offers two halls with stone fireplaces, a library that occupies three halls with 4.5-meter bookshelves up to the ceilings painted with coats of arms of native families, eight bathrooms and a private chapel with access to the street.

The garden patio has benches and Delft tiles, as well as annexes, warehouses, riding arena, among others.

The property is in the Ribatejo marshes, 5.4 km from Golegã, famous for the National Horse Fair, and 22.6 km from Santarém. With excellent access to the A1 and IC3, it is located in an ARU area, making it an ideal investment opportunity for conversion into a hotel or other tourism project.

RPH - Real Estate - We make a difference!

With the start of activity in January 2016, we have a young, experienced, dynamic team with the ability to solve.

This team together has more than 30 years of experience in the real estate market.

To help our clients, we offer a wide range of solutions ranging from mediation, topography, consultancy, projects, refurbishments, etc.

We have qualified technical staff, as well as several partners recognized for their professional careers.

We are here for you!

AMI 11994

All information presented on this page is the sole responsibility of our Agency. They should be considered correct but do not exclude the need for verification. This information is not binding.

Property Features

- Energetic certification: F



Rita Pinto e Nuno Hilário

966617800 ²

geral@rph.pt

T 243 155 655 ¹ · T 966 617 800 ² · E geral@rph.pt
Av. Bernardo Santareno, Loja 29-B, 2005-177 Santarém
AMI 11994

¹ (Call to national fixed network) | ² (Call to national mobile network)