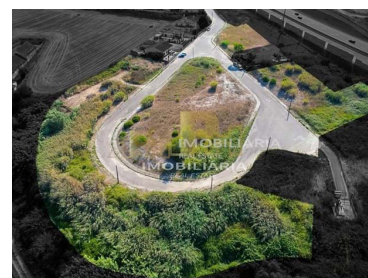




## Santarém - Urban land



312

Area (m<sup>2</sup>)



520,9

Land Area (m<sup>2</sup>)

N/A

(EUR €)

### Urban land plots from €30,000.

Urban land plots from €30,000.

Urban plot of land, Quinta das Trigosas, for construction of an independent house, with 429m<sup>2</sup> of land and 128m<sup>2</sup> of implantation for 2 floors.

We have 18 more lots, with the largest plot of land 1138m<sup>2</sup> for a house of 344m<sup>2</sup> and the one with the largest construction for 420m<sup>2</sup>.

Close to motorway access, area of recent housing.



**Rita Pinto e Nuno Hilário**

966617800 <sup>2</sup>

geral@rph.pt

T 243 155 655 <sup>1</sup> · T 966 617 800 <sup>2</sup> · E geral@rph.pt  
Av. Bernardo Santareno, Loja 29-B, 2005-177 Santarém  
AMI 11994

<sup>1</sup> (Call to national fixed network) | <sup>2</sup> (Call to national mobile network)



## Property Features

- Energetic certification: Exempt



**Rita Pinto e Nuno Hilário**

966617800 <sup>2</sup>

geral@rph.pt

**T 243 155 655 <sup>1</sup> · T 966 617 800 <sup>2</sup> · E geral@rph.pt**  
**Av. Bernardo Santareno, Loja 29-B, 2005-177 Santarém**  
**AMI 11994**

<sup>1</sup> (Call to national fixed network) | <sup>2</sup> (Call to national mobile network)