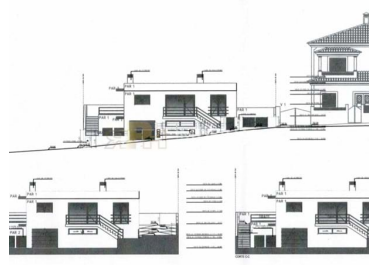




Santarém - Urban land



240

Area (m²)



402,9

Land Area (m²)

75 000 €

(EUR €)

Plot of land with 402m2 with approved project

Ref. TUE/0949

Plot of land intended for urban construction with an approved project, with a total land area of 402.90 m², building implantation area 120 m², gross construction area 240 m² and with collection of the construction license until September 27, 2024.

RPH - Real Estate - We make a difference!

With the start of activity in January 2016, we have a young, experienced, dynamic team with resolution capacity.

This team together has more than 40 years of experience in the real estate market.



Rita Pinto e Nuno Hilário

966617800 ²

geral@rph.pt

T 243 155 655 ¹ · T 966 617 800 ² · E geral@rph.pt
Av. Bernardo Santareno, Loja 29-B, 2005-177 Santarém
AMI 11994

¹ (Call to national fixed network) | ² (Call to national mobile network)



To help our clients, we offer a set of solutions ranging from mediation, surveying, consulting, projects, refurbishments, etc.

We have qualified technical staff, as well as several partners recognized for their professional paths.

We're here for you!

AMI 11994

All information presented on this page is the sole responsibility of our Agency. They must be considered correct, but do not exclude the need for verification. This information is not binding.

Property Features



Rita Pinto e Nuno Hilário

966617800 ²

geral@rph.pt

T 243 155 655 ¹ · T 966 617 800 ² · E geral@rph.pt
Av. Bernardo Santareno, Loja 29-B, 2005-177 Santarém
AMI 11994

¹ (Call to national fixed network) | ² (Call to national mobile network)