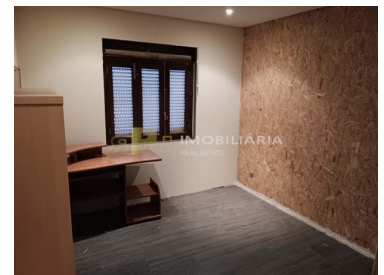




## São Vicente do Paul e Vale de Figueira - Villa



**2**  
Bedrooms

**1**  
Bathrooms

**74**  
Area (m<sup>2</sup>)

**2906**  
Land Area (m<sup>2</sup>)

**95 000 €**  
(EUR €)



## 2 bedroom villa with 2900 m<sup>2</sup> of land - Vale de Figueira - Northern Line - 1h09 from Lisbon

REF<sup>a</sup> MOR/0942

Single storey 2 bedroom villa with 74 m<sup>2</sup> of gross construction area inserted in a plot of land with 2900 m<sup>2</sup>, independent, located about 1 km from the Vale de Figueira halt (North line) and 1h09 from Lisbon (East). Consisting of:

- Kitchen and living room with fireplace, which form a common space;
- Social toilet;
- 2 Bedrooms.



**João Ferrão**  
Real estate consultant

966617800 <sup>2</sup>

joaoferrao@rph.pt

T 243 155 655 <sup>1</sup> · T 966 617 800 <sup>2</sup> · E geral@rph.pt  
Av. Bernardo Santareno, Loja 29-B, 2005-177 Santarém  
AMI 11994

<sup>1</sup> (Call to national fixed network) | <sup>2</sup> (Call to national mobile network)



It also has an interior opening to the attic, allowing the installation of an access structure.

Exterior:

- Fully walled and deep land, it has a well and trees (olive trees, fig trees and some small fruit trees). It has a very slight slope, full sun exposure (east and south) and an excellent view of the countryside.

Important note: the process of granting the user license is pending, taking place in the competent municipal services.

Located in a very pleasant area within the village, being a street composed of houses and some agricultural land, served by water, electricity, sewage and fiber optic networks. The village has public infrastructures such as a health center, school (kindergarten and first cycle), playground and leisure park. In terms of transport, it is served by buses, in addition to the train.

RPH - Real Estate - We make a difference!

With the start of activity in January 2016, we have a young, experienced, dynamic team with resolution capacity.

This team has more than 30 years of experience in the real estate market.

To help our clients, we offer a wide range of solutions ranging from mediation, surveying, consulting, projects, refurbishments, etc.

We have qualified technical staff, as well as several partners recognized for their professional paths.

We're here for you!

AMI 11994

All information presented on this page is the sole responsibility of our Agency. They must be regarded as correct, but do not exclude the need for verification. This information is not binding.



**João Ferrão**

Real estate consultant

966617800 <sup>2</sup>

joaoferrao@rph.pt

**T 243 155 655 <sup>1</sup> · T 966 617 800 <sup>2</sup> · E geral@rph.pt**  
**Av. Bernardo Santareno, Loja 29-B, 2005-177 Santarém**  
**AMI 11994**

<sup>1</sup> (Call to national fixed network) | <sup>2</sup> (Call to national mobile network)



## Property Features

- Fitted wardrobes
- Proximity: Open field, Pharmacy, Public Transport, Schools, Playground
- Built year: 1981
- Drive way
- Main drainage
- Quiet Location
- Well
- Walled land area
- Solar orientation: South, East
- Fireplace
- Fenced plot
- Floors: 1
- Views: Countryside views, Village view
- Attic
- Parking space
- Sealed land area
- Energetic certification: E



**João Ferrão**

Real estate consultant

966617800 <sup>2</sup>

joaoferrao@rph.pt

**T 243 155 655 <sup>1</sup> · T 966 617 800 <sup>2</sup> · E geral@rph.pt**  
**Av. Bernardo Santareno, Loja 29-B, 2005-177 Santarém**  
**AMI 11994**

<sup>1</sup> (Call to national fixed network) | <sup>2</sup> (Call to national mobile network)