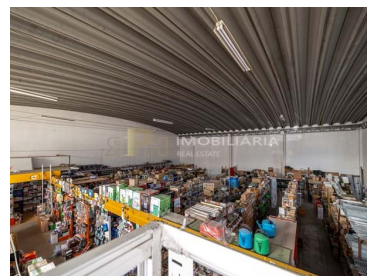




## Romeira e Várzea -



2

洗手间



540,15

区域 (m<sup>2</sup>)



286,1

土地面积 (m<sup>2</sup>)

N/A

(EUR €)



Ana Sarmento

966617800 <sup>2</sup>

anasarmento@rph.pt

T 243 155 655 <sup>1</sup> · T 966 617 800 <sup>2</sup> · E geral@rph.pt  
Av. Bernardo Santarém, Loja 29-B, 2005-177 Santarém  
AMI 11994

<sup>1</sup> (拨打全国固网) <sup>2</sup> (全国移动网络通话)



## 物业特色

- 接近: 购物区, 餐馆, 城市, 领域, Hospital, Farmácia, Public Transport, Schools, Public Swimming Pools, Playground
- 地板: 2
- 市政下水道
- ???
- 建造年份: 2019
- 视图: 查看城市化
- 电话



**Ana Sarmiento**

966617800 <sup>2</sup>

anasarmiento@rph.pt

T 243 155 655 <sup>1</sup> · T 966 617 800 <sup>2</sup> · E geral@rph.pt  
Av. Bernardo Santareno, Loja 29-B, 2005-177 Santarém  
AMI 11994

<sup>1</sup> (拨打全国固网)<sup>2</sup> (全国移动网络通话)